

Cast Iron Ball Check Valve

2½", 3", 4", 5", 6" & 8"

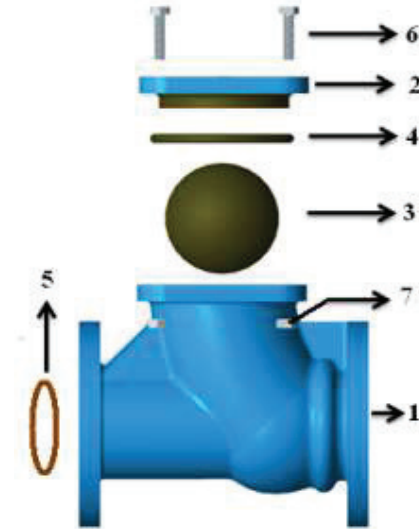


Features

- Simple and robust design so no mechanism involved.
- MS reinforced NBR coated ball for excellent and over years consistent performance.
- Minimum Head Loss: Clear passage equal to nominal valve dia gives uninterrupted flow, resulting low energy consumption.
- Self cleaning by rolling movement of ball avoid scaling inside or on ball.
- Ball is the only moving part inside, avoid clogging and maintenance free performance.
- Walls inside Check valves are epoxy coated gives free and frictionless movement to water and for longer life of ball.
- ½" Female threaded BSP/NPT port at Inlet of valve: Bypass/priming of pump if required.
- Arrow for correct installation of Check valve.

Technical Specifications

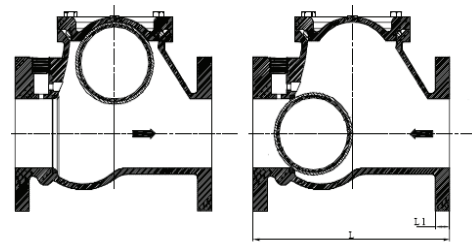
- Type of check valve: Ball type Flanged End Check Valve
- Flanged End Connection: 2½" (65mm), 3" (80mm), 4" (100mm), 5" (125mm), 6" (150mm) & 8" (200mm)
- Max. Operating Pressure : upto 4": 16 kg/cm² (PN 16) and above 4": 10 kg/cm² (PN 10)
- Min. Cracking pressure: Valve begins to open at 1 to 1.5Psi
- Face to Face length: IS 5312 Part - 1: 1984/ DIN 3202 - F6
- Flange dimensions suited for Standard: BS10 (Table D) /Bs4504



Material Specification

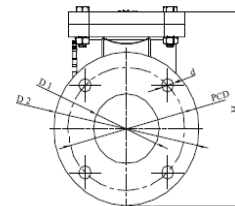
| PART NO | PART NAME | MATERIAL | QTY. |
|---------|--------------|--------------|-------|
| 1 | FV Body | Cast Iron | 1 |
| 2 | FV Ball | NBR + CRC | 1 |
| 3 | FV Body Seal | NBR | 1 |
| 4 | FV Ball Seal | L. T. Bronze | 1 |
| 5 | FV Strainer | Cast Iron | 1 |
| 6 | Bolt | MS Plated | 4/6/8 |
| 7 | Nut | MS Plated | 4/6/8 |

Check Valves Size & Dimensions



Open Position

Closed Position



Dimensions (mm/Inch)

| Size | 2½" | 3" | 4" | 5" | 6" | 8" |
|---------------|---------|----------|------------|----------|----------|----------|
| Nom. Dia (D1) | 65 | 80 | 100 | 125 | 150 | 200 |
| H | 210/8.3 | 245/9.7 | 283.5/11.2 | 320/12.6 | 395/15.6 | 500/19.7 |
| L | 240/9.5 | 263/10.4 | 300/11.8 | 350/13.8 | 400/15.8 | 496/19.5 |
| L1 | 20/0.80 | 20/0.80 | 22/0.87 | 22/0.87 | 24/0.94 | 28/1.1 |
| D2 | 165/6.5 | 184/7.2 | 216.85 | 254/10 | 279/11 | 340/13.4 |
| d | 17/0.67 | 17/0.67 | 17/0.67 | 17/0.67 | 17/0.67 | 17/0/67 |
| PCD | 127/5 | 146/5.8 | 178/7 | 210/8.3 | 235/9.3 | 292/11.5 |
| No. of Holes | 4 | 4 | 4 | 8 | 8 | 8 |